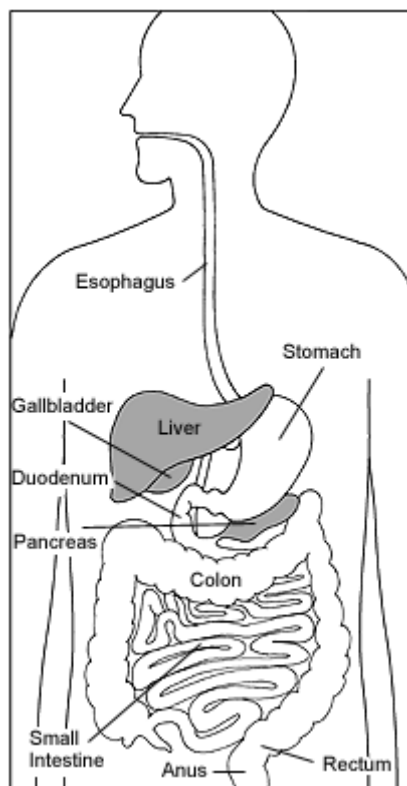


## ERCP (Endoscopic Retrograde Cholangiopancreatography)

Endoscopic retrograde cholangiopancreatography (en-doh-SKAH-pik REH-troh-grayd koh-LAN-jee-oh-PANG-kree-uh-TAH-gruh-fee) (ERCP) enables the physician to diagnose problems in the liver, gallbladder, bile ducts, and pancreas. The liver is a large organ that, among other things, makes a liquid called bile that helps with digestion. The gallbladder is a small, pear-shaped organ that stores bile until it is needed for digestion. The bile ducts are tubes that carry bile from the liver to the gallbladder and small intestine. These ducts are sometimes called the biliary tree. The pancreas is a large gland that produces chemicals that help with digestion and hormones such as insulin.

ERCP is used primarily to diagnose and treat conditions of the bile ducts, including gallstones, inflammatory strictures (scars), leaks (from trauma and surgery), and cancer. ERCP combines the use of x rays and an endoscope, which is a long, flexible, lighted tube. Through the endoscope, the physician can see the inside of the stomach and duodenum, and inject dyes into the ducts in the biliary tree and pancreas so they can be seen on x rays.

For the procedure, you will lie on your left side on an examining table in an x-ray room. You will be given medication to help numb the back of your throat and a sedative to help you relax during the exam. You will swallow the endoscope, and the physician will then guide the scope through your esophagus, stomach, and duodenum until it reaches the spot where the ducts of the biliary tree and pancreas open into the duodenum. At this time, you will be turned to lie flat on your stomach, and the physician will pass a small plastic tube through the scope. Through the tube, the physician will inject a dye into the ducts to make them show up clearly on x rays. X



The digestive system

William F. Erber, M.D., P.C.  
Gastroenterology and Endoscopy  
Diseases of the Digestive Tract, Liver and Pancreas  
Board Certified

William F. Erber, M.D., F.A.C.P., F.A.C.G., A.G.A.F.  
Jonathan A. Erber, M.D.

591 Ocean Parkway  
Brooklyn, N.Y. 11218  
Tel (718) 972-8500  
Fax (718) 972-0064  
www.drerber.com

rays are taken as soon as the dye is injected.

If the exam shows a gallstone or narrowing of the ducts, the physician can insert instruments into the scope to remove or relieve the obstruction. Also, tissue samples (biopsy) can be taken for further testing.

Possible complications of ERCP include pancreatitis (inflammation of the pancreas), infection, bleeding, and perforation of the duodenum. Except for pancreatitis, such problems are uncommon. You may have tenderness or a lump where the sedative was injected, but that should go away in a few days.

ERCP takes 30 minutes to 2 hours. You may have some discomfort when the physician blows air into the duodenum and injects the dye into the ducts. However, the pain medicine and sedative should keep you from feeling too much discomfort. After the procedure, you will need to stay at the hospital for 1 to 2 hours until the sedative wears off. The physician will make sure you do not have signs of complications before you leave. If any kind of treatment is done during ERCP, such as removing a gallstone, you may need to stay in the hospital overnight.

## Preparation

Your stomach and duodenum must be empty for the procedure to be accurate and safe. You will not be able to eat or drink anything after midnight the night before the procedure, or for 6 to 8 hours beforehand, depending on the time of your procedure. Also, the physician will need to know whether you have any allergies, especially to iodine, which is in the dye. You must also arrange for someone to take you home—you will not be allowed to drive because of the sedatives. The physician may give you other special instructions.

## For More Information

### American Gastroenterological Association (AGA)

National Office  
4930 Del Ray Avenue  
Bethesda, MD 20814  
Phone: 301-654-2055  
Fax: 301-654-5920  
Email: [info@gastro.org](mailto:info@gastro.org)



William F. Erber, M.D., P.C.  
Gastroenterology and Endoscopy  
Diseases of the Digestive Tract, Liver and Pancreas  
Board Certified

William F. Erber, M.D., F.A.C.P., F.A.C.G., A.G.A.F.  
Jonathan A. Erber, M.D.

591 Ocean Parkway  
Brooklyn, N.Y. 11218  
Tel (718) 972-8500  
Fax (718) 972-0064  
[www.drerber.com](http://www.drerber.com)

Internet: [www.gastro.org](http://www.gastro.org)

---

## National Digestive Diseases Information Clearinghouse

2 Information Way  
Bethesda, MD 20892-3570  
Phone: 1-800-891-5389  
Fax: 703-738-4929  
Email: [nddic@info.niddk.nih.gov](mailto:nddic@info.niddk.nih.gov)  
Internet: [www.digestive.niddk.nih.gov](http://www.digestive.niddk.nih.gov)

The National Digestive Diseases Information Clearinghouse (NDDIC) is a service of the National Institute of Diabetes and Digestive and Kidney Diseases (NIDDK). The NIDDK is part of the National Institutes of Health of the U.S. Department of Health and Human Services. Established in 1980, the Clearinghouse provides information about digestive diseases to people with digestive disorders and to their families, health care professionals, and the public. The NDDIC answers inquiries, develops and distributes publications, and works closely with professional and patient organizations and Government agencies to coordinate resources about digestive diseases.

Publications produced by the Clearinghouse are carefully reviewed by both NIDDK scientists and outside experts.

This publication is not copyrighted. The Clearinghouse encourages users of this publication to duplicate and distribute as many copies as desired.

---

NIH Publication No. 05-4336  
November 2004

